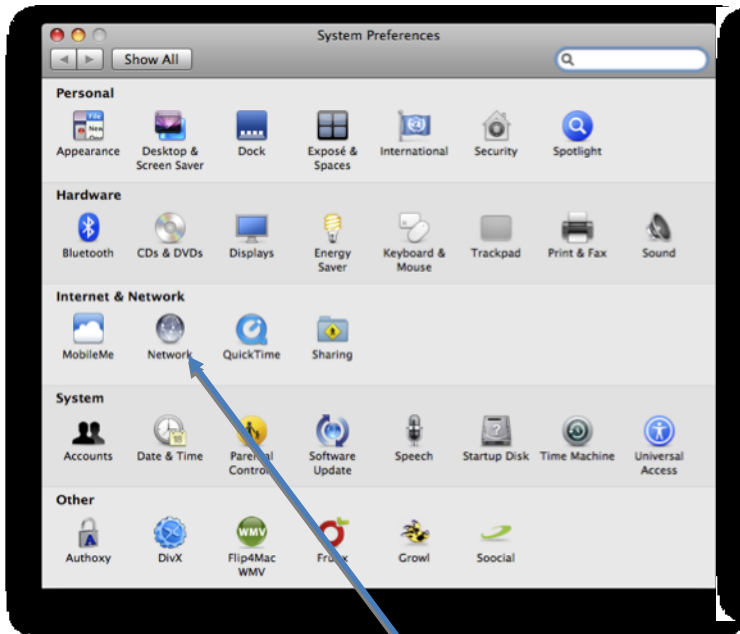
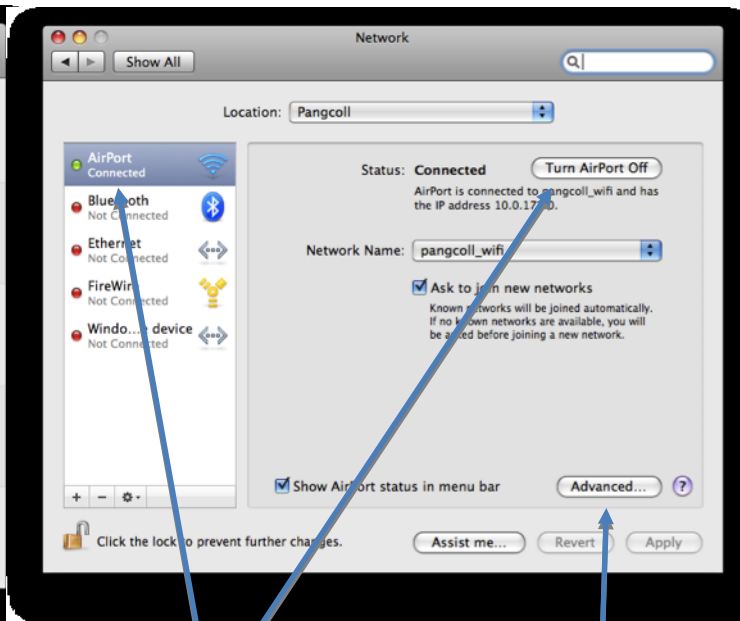


Connecting Apple Mac to College Network



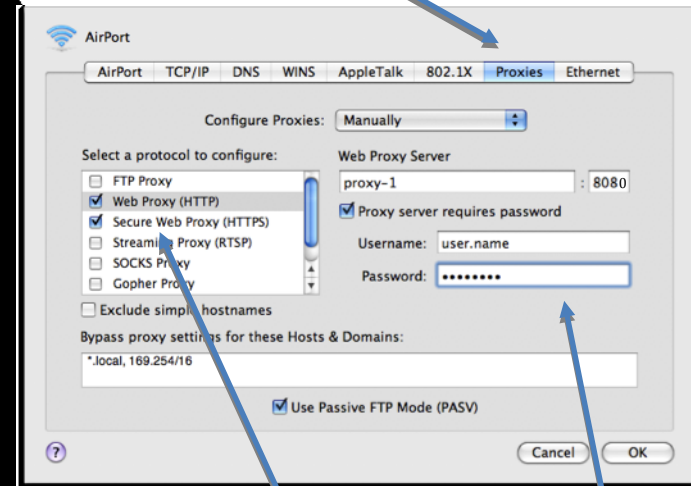
In the System Preferences, select the Network settings



Make sure AirPort is turned on and selected and pangcoll_wifi is connected

Select Advanced

Click on the "Proxies" tab



Select both "Web Proxy" and "secure Web Proxy"

Set the Proxy server for both to "Proxy-1" and the port to "8080"

The server does require password, type in your

School username

School password

Click OK